



## Contact us

Street Pitagora, 11 - 20016 Pero MI  
02 8853 501  
[www.88dent.com](http://www.88dent.com)  
[info@88dent.com](mailto:info@88dent.com)

Rev. 1



NORMAL  
PRINTER  
**827.62 Kg**  
CO<sub>2</sub>e

3DBUSINESS  
**74.34 kg**  
CO<sub>2</sub>e



# 3DBB

THINK GREEN THINK FUTURE

MADE IN ITALY

**88**  
*dent*



**3DDB**

THINK GREEN THINK FUTURE

MADE IN ITALY



# Index

3D Business System ..... 4

Software SPREENT 3D ..... 6

Common features 3DBUSINESS PRINTERS ..... 8

Comparison of processings ..... 10

Technical features ..... 11

# 3Dprinters

STRATO ..... 12

Galaxy 6 plus ..... 13

Galaxy 10 ..... 14

Accessories ..... 15

Resin ..... 21

The partnership between 88dent and 3DBusiness has given life to a new line of 3D printers characterized by high performance and sustainability.

The peculiarity of these printers, totally built from other 3D printers, lies in their production

**MADE** IN **ITALY**

\*Patent pending

## 3D Business System



**Esclusive eco-friendly external texture design** of each machine\*



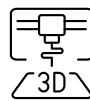
Complete prints washing system with **Wash & Dry**\*



Automatic 3D Printers' internal heating and cooling **temperature control** management system\*



**Blown air heating** for optimal resin management



**Passive tilting system** of the print tank, for ultraprecise print detachment (Strato)



Unique **Anti-vibration air filter**

# Advanced features

3D Business offers tools to simplify the management of printed objects with high precision and specific results. Spreent 3D imports files in different formats while maintaining the original specifications.

1

## MESH ANALYSIS AND REPAIR

Spreent 3D uses a simple and intuitive user approach with many operations performed automatically to achieve a perfect result. During file import, problems are analyzed and resolved in seconds with tools for managing clusters and correct orientation of normals. Furthermore, a mesh-fix solves all mesh issues with just one click.

2

## NESTING

To achieve optimal results in manufacturing, it is important to position objects precisely. The user can assign a positioning and support profile to each object, choosing from several options, including automatic, manual and assisted, with customizable parameters. This can help optimize production times and costs.

3

## NETWORK SCAN

Spreent 3D software is integrated to allow the user to work from their computer as if they were using the printer screen.

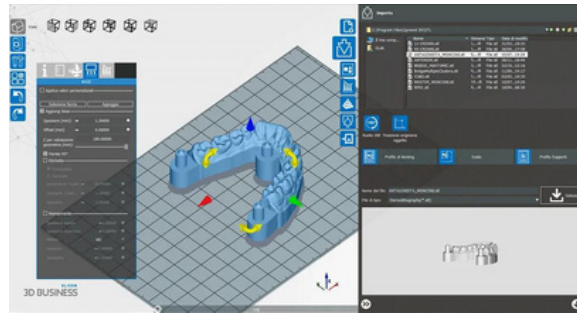
4

## SUPPORTS

Spreent 3D offers customizable options for inserting supports, including the automatic option that covers minimum points, slope areas and dimensions of supports, and the manual option that allows you to insert them with just one click.

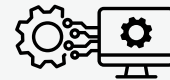
# Software SPREENT 3D:

The perfect solution for the production of your models.



## Innovative Software

The extremely easy to use interface allows the user to prepare for the print, guaranteeing perfect results.



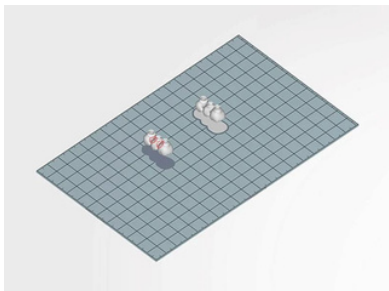
## Technological Development

Spreent 3D is optimized for production with 3D printers with Galaxy Series DLP technology. For each of them, the application optimizes the projection in order to obtain the best final result depending on the types of resins used and the characteristics of the model being printed.

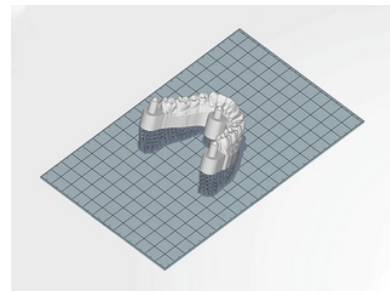


## Complete solution

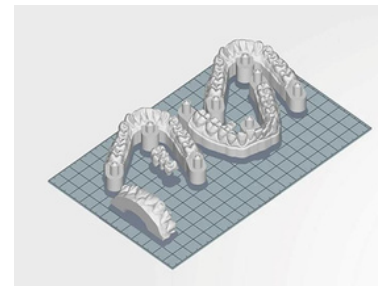
Spreent 3D is equipped with all the functions and automation necessary for the entire process. From analyzing to repairing files to managing the machine, it makes the product extremely easy to use.



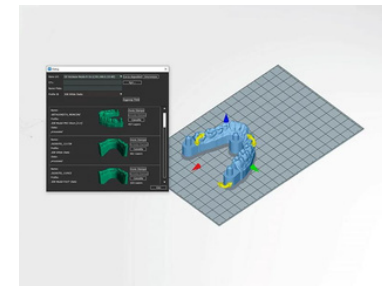
Mesh analysis



Supports



Nesting



Network Scan



# 3D printers

- > Strato
- > Galaxy 6 Plus
- > Galaxy 10

# Common features 3DBUSINESS PRINTERS



**Reduction of CO2 emissions:**  
 Adopt processes to reduce CO2 emissions. It requires an extremely limited amount of CO2 for its production. The environmental cost of producing steel is four times higher than that of PLA, with further emphasis on the difference in density between the materials.

**Bio-degradable materials:**  
 Develop bio-degradable and UV resistant materials.

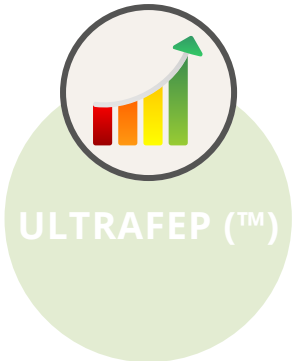
**3D printer manufacturing technique:**  
 3D printers are entirely created with the additive manufacturing technique.

**Technopolymer:**  
 Develops technopolymer by adding aluminium powder following the sustainable philosophy.

**Thermal conductivity:**  
 The printers have remarkably low thermal conductivity.

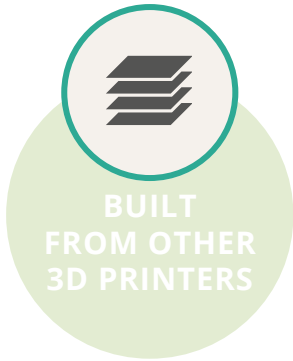
**Thermal and acoustic insulation:**  
 They guarantee high thermal and acoustic insulation.

**Energy consumption:**  
 As a result, energy consumption is lowered.



**UltraFEP (™):**  
**it's beyond everything!**

- 3x Printing speed
- 3x Useful life
- + Detail
- + Quality
- - Stress



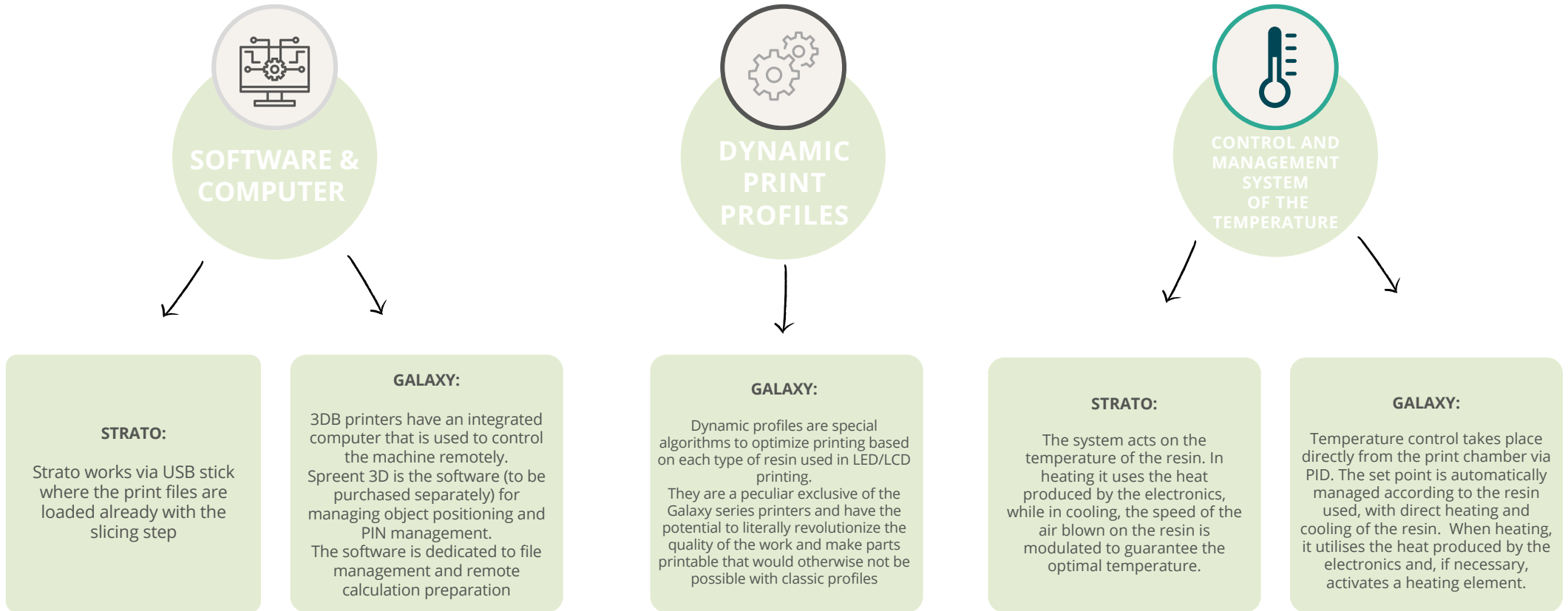
**Alveolar structure, resistant and light:**

The printers have a durable and lightweight structure and are shockproof. The system is based on a closed-cell honeycomb structure, which forms the bones and skin of the walls of printers and polymerization booths. A particular feature of this material is its total resistance to UV rays.

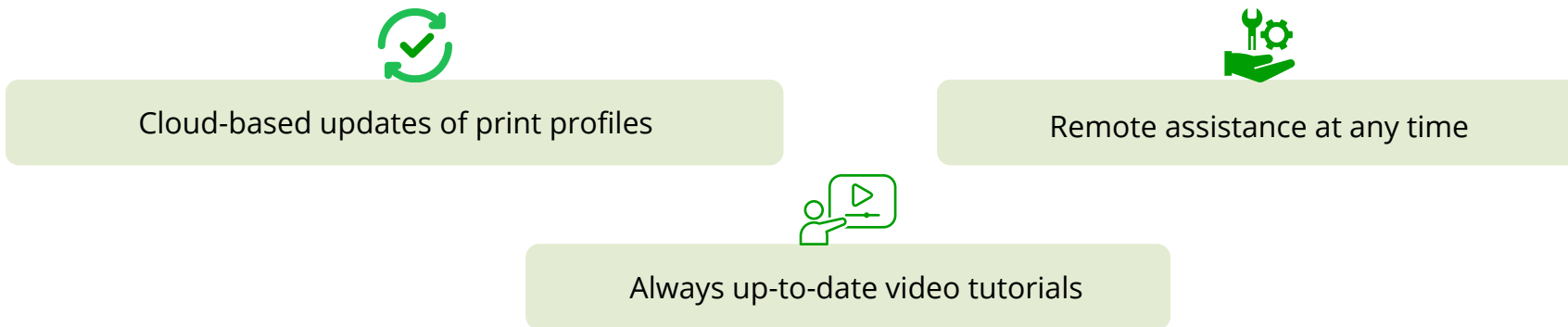




# 3DBUSINESS PRINTERS



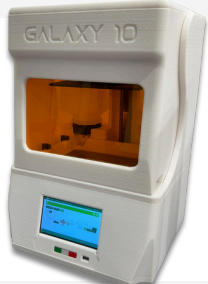


## A GUARANTEED SYSTEM

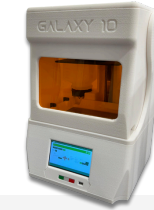


And many other new features under development...

# COMPARISON OF PROCESSINGS

	STRATO	GALAXY 6 PLUS	GALAXY 10
<b>PARAMETER</b>			
Temperature controls	Active control with resin cooling/heating	Independent active electronic control of resin and internal volume	Independent active electronic control of resin and internal volume
Wavelengths	405 nm	405 nm	405 nm
Aesthetic details	✓	✓	✓
Functional prototypes of technical resins	✓	✓	✓
Dental models	✓	✓	✓
Extremely high precision models	✓	✓	✓
Temporary crown bridges	✓	✓	✓
Surgical guides	✓	✓	✓
Aligners and bytes	✓	✓	✓
Skeletons	✓	✓	✓
Tray	✓	✓	✓
Surface quality	Unbeatable	Unbeatable	Unbeatable
Geometric accuracy	Very high	Very high	Very high
Printing speed	Very fast	Very fast	Very fast

# TECHNICAL FEATURES



TECHNICAL DATA	STRATO	GALAXY 6 PLUS	GALAXY 10
Packaging size and weight	38,5x28,5x25 7Kg	40x40x70cm 10,5Kg	50x50x70cm 17Kg
Size and weight	22x18,5x33cm 4,5Kg	29x27x52cm 7,5Kg	39x37x59cm 14.5Kg
Technology	MSLA LED-LCD	MSLA LED-LCD	MSLA LED-LCD
LCD size	6.23" 4K	6.6", 4K, monochrome	10.1" 16K
LCD resolution	3840x2400	4098x2560 4K MONO (open cell)	15120x6230
Print volume	134x84 (H110) mm	143x89 (H160) mm	220x130 (H180) mm
Pixel size	34x34um	35x35um	14x19um
Detachment method	ULTRA-FEP	ULTRA-FEP	ULTRA-FEP
Temperature controls	Resin and volume at controlled temperature	Resin and volume at controlled temperature	Resin and volume at controlled temperature
Software	ChiTuBOX	Spreent 3D	Spreent3D
Interface	Display touch 5"	Display touch 7" web based	Display touch 7" web based
Drive	Microstepper 1,2 micron	Microstepper 1,2 micron	Microstepper 1,2 micron
Asse Z	Guide linear HIWIN	Guide linear HIWIN	Guide linear HIWIN
UV source	LED MONO Ultra High Power	MONO LED, double parallel correction lens	Fresnel technology double lens LED
Wave length	405 nm	385/405 nm	405 nm
Connections	USB	USB and Ethernet	USB and Ethernet
Biocompatible resins	Open system compatible with all 405nm resins	Open system compatible with all 405nm resins	Open system compatible with all 405nm resins
Cooling down	SUPER SILENT technologies	SUPER SILENT technologies	SUPER SILENT technologies
Slicing/slicer method	-	Integrated into the printer	Integrated into the printer
Internal memory	-	64 GB (Obs. fine 512 GB)	Disco NVMe 120GB (Note 2T)
Resin reserve	-	-	Additional 2.5l heated tank with integrated resin mixer
Note		<p>UPGRADES Galaxy 6.2:                      More powerful internal computer with enhanced wifi                      Poliboard V2 with active electronic LED management                      New aluminium printing plate milled from solid material with anodised surface                      Other minor improvements</p>	<p>Self-calibrating printing plate.                      Automatic resin filling and magnetic drive resin mixer</p>

Click and discover



FAST resin model for thermoforming



Skeletonized castable resin



Accessories:

VAT Rest 2 HT, VAT Rest 5



THINK GREEN  
THINK  
STRATO

Air-conditioned  
Ultracompact  
Ultra fast  
Patented passive tilting system of the printing tank

## STRATO



Touch screen control



DESIGNED TO LAST



AUTOMATIC RESIN AIR  
CONDITIONING\*



ANTI-VIBRATION AIR  
FILTER\*



TEMPERATURE CONTROL AND  
MANAGEMENT SYSTEM\*



ULTRAFEP AS STANDARD

\*Patent pending

Click and discover



Bite



Resin: Mack4D model



Accessories:  
VAT Rest 2 HT  
Software Spreent 3D



THINK GREEN  
THINK  
GALAXY 6 PLUS

Fast (reduction of printing times from 50% to 70%)  
Precise (drastic reduction of printing defects in critical areas)

## GALAXY 6 PLUS



Touch screen control



Multi device control



DYNAMIC PROFILE



TEMPERATURE CONTROL  
AND MANAGEMENT SYSTEM



REMOTE ASSISTANCE  
AT ANY TIME



STABLE TEMPERATURE  
& POWER SLAB

[Click and discover](#)



Printer Galaxy 10 Resina:  
3D Business Water white

Accessories:  
Software Spreent 3D



THINK GREEN  
THINK  
GALAXY 10

Large print volume  
Automatic heating of the closed loop  
printing chamber  
Automatic filling of the printing tank

## GALAXY 10



Touch screen  
control



Multi device  
control



DYNAMIC PROFILE



PATENTED TEMPERATURE  
CONTROL AND  
MANAGEMENT SYSTEM\*



AUTOMATIC RESIN  
MANAGEMENT



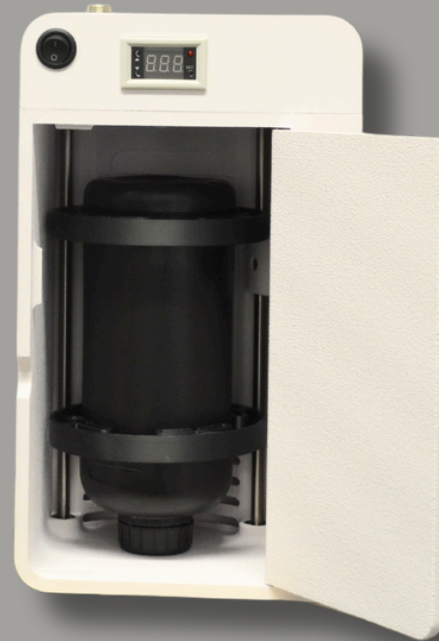
STABLE TEMPERATURE



# Accessories

- > Mixer
- > Wash & Dry
- > Light Box 2

[Click and discover](#)



THINK GREEN  
THINK  
MIXER

Essential  
Easy  
Immediate  
Compact

Mixer size and weight	19x32,5x17cm 2,4Kg
Packaging size and weight	25x35x23cm 3,5Kg
Internal volume dimensions	Diametro MAX 130mm Altezza MAX 255mm
Power	Separate supply 12V 5A
Average consumption	0,025KW/h
Maximum temperature	45°C MAX

## MIXER



IT DOES NOT  
INCORPORATE AIR



UNIFORM HEATING



INTEGRATED DIGITAL  
THERMOSTAT



[Click and discover](#)

Size and weight	375x250 H315mm 3,5Kg
Internal dimension	359x234 H212mm height MAX 277mm
Collection tank capacity	2500ml
Power	Separate supply 12V 1A
Tank capacity	700ml Approximately 100 washes
Compressed air	2 Bar MIN Optional mini compressor

Accessories:  
VAT Rest 4



THINK GREEN  
THINK  
WASH & DRY

Ecological  
Efficient  
Quick

Wash & Dry: the only ultra-rapid integrated system.  
The 3D Business Wash & Dry system uses spray technology to pre-wash, wash and dry a model in just 60 seconds.

## WASH & DRY



NEW NEBULIZING TECHNOLOGY  
(60sec-200 washes/litre)



CO2 EMISSION REDUCTION  
& ECOLOGICAL CLEANER



PATENTED SYSTEM\*

\*Patent pending

Packaging size and weight	30x30x50cm 4,5Kg
UV booth dimensions and weights	20x20x32cm 2,6Kg
External bulk	200x200 h320 mm
Internal volume and dimensions	7.5 Liters/ 180x180 h210 mm High working volume/footprint ratio
Structure	Interments in biodegradable recyclable materials Certificazione UV resistente
Cooling down	Ultra silent active fans
UV LED power	2x80W with Power Slab technology
Heating	Passive up to 80°C High energy efficiency thanks to the recovery of the heat generated by the LEDs
Display	LED, programmable timer 1-999 min
Type of polymerization	Mono band 405nm with concentrated energy
Machine type	High efficiency UV Curing Booth One button operation



THINK GREEN  
THINK  
LIGHT BOX 2

High polymerization speed

Easy to use

Compact

Reliable

Sustainable

Resistant

Silent



Accessories:  
VAT Rest 2HT

[Click and discover](#)

## LIGHT BOX 2



ALVEOLAR STRUCTURE



CONCENTRATED LIGHT



EFFICIENT THERMAL INSULATION



DOUBLE POWER SLAB  
TECHNOLOGY

# ACCESSORIES

<b>VAT-Rest-4</b>	Container for Wash & Dry 1 tanks, stackable
<b>VAT-Rest-5</b>	Container resin tanks for Strato (2 VATs), stackable
<b>VAT-Rest-2 HT</b>	Heated resin tanks container for Galaxy 6 Plus / stackable with Light Box 2
<b>Spreent 3D</b>	Software for object positioning and PIN management

# CONSUMABLES

<b>3DB-LCDCLEAN</b>	Special BIO cleaner for LCD and FEP 30ml (with anti-adhesive properties)
<b>3DB-CHW25</b>	Regeclean odorless high power and long lasting detergent for washing resin 2.5 litres
<b>3DB-RAPIDCLEAN</b>	Rapid Cleaner 250gr

# SPARE PARTS

<b>G6-VascaUFEP</b>	Galaxy 6 /Strato resin vat with ULTRA FEP HD300
<b>G10-VascaUFEP</b>	Galaxy 10 resin vat with ULTRA FEP HD300
<b>3DB-Mixer</b>	Mixer
<b>STRATO-PLATE</b>	Complete plate for Strato
<b>G6P-PLATE</b>	Complete plate for Galaxy 6 PLUS
<b>G10-PLATE</b>	Complete plate for Galaxy 10
<b>STRATO-LCD35M</b>	LCD Strato
<b>G6-LCD35M</b>	LCD Galaxy 6 PLUS
<b>G10-LCD45M</b>	Galaxy 10 LCD 5K

# NEW RESINS PRINTERS 3D



New high-precision UV resins for impeccable results compatible with most LCD and DLP 3D printers, designed to offer maximum detail and reliability. Temporary and Surgical Guide resins are biocompatible and designed to ensure excellent performance on all our 3D printers Made in Italy, with a commitment to sustainability.



## UV RESIN FOR MODELS 1 KG WATER WASHABLE MODEL UV RESIN GRAY

Engineered to guarantee exceptional precision in the dental workflow, **the Compact Water Washable Model** delivers ultra-defined details and impeccable surfaces. Its water-based cleaning process eliminates the necessity for solvents, enhancing safety and environmental sustainability. Featuring superior adhesion to the build platform, it is perfectly suited for producing accurate and dependable dental models.



## UV RESIN FOR MODELS 1 KG UV RESIN FOR DENTAL MODELS ALMOND

Optimized for the production of high-precision dental models, **Compact Model Pro** delivers an exceptional finish for accurate scans. It ensures outstanding print reliability, smooth surfaces, and optimal machinability, making it suitable for dental models of all sizes while maximizing printing speed.



## UV RESIN FOR SURGICAL GUIDES, 0.5 KG SURGICAL GUIDE UV RESIN CLEAR

Engineered for the production of highly-accurate surgical guides, **Compact Guide** provides exceptional visibility and technical accuracy. Its formulation ensures resistance to bending and fracture, thereby guaranteeing a precise and dependable fit for directing implant instruments in dental surgery.



## UV RESIN FOR ORTHODONTICS, 1 KG UV RESIN FOR ORTHO MODELS GRAY

Developed for the creation of durable and intricate orthodontic models, **Compact Ortho Model** offers exceptional surface hardness, abrasion resistance, and superior ease of printing and polymerization. It ensures the production of robust and dimensionally stable models, thereby enhancing the efficiency of the manufacturing process in dental laboratories.



UV RESIN FOR TEMPORARY USE, 0,5 KG

**TEMPORARY C&B UV RESIN A2**

Compact Temporary is a biocompatible material designed for creating temporary crowns and bridges. It combines outstanding mechanical strength with a natural tooth-like appearance, ensuring both functionality and comfort. Thanks to its precise fit and durability, it provides a reliable temporary solution before the final prosthesis is placed.

Colors: A2

UV RESIN FOR TEMPORARY USE, 0,5 KG

**TEMPORARY C&B UV RESIN A3**

Designed for the fabrication of temporary crowns and bridges, Compact Temporary is biocompatible and provides exceptional mechanical strength along with the aesthetics and coloration of natural teeth. It is ideal for functional and comfortable temporary restorations, ensuring optimal fit and an extended lifespan prior to replacement with the definitive prosthesis.

Colors: A3



**3DB**

**THINK GREEN THINK FUTURE**

MADE IN ITALY



# Note

A series of ten horizontal dotted lines providing space for notes.

---

---

---

---

---

---

---

---

---

---



# Note

A series of ten horizontal dotted lines for writing notes.



88dent.com  
info@88dent.com

